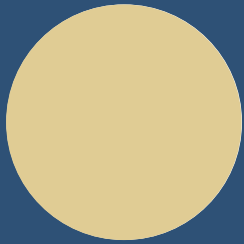


SELECTION CHART FOR STAMPED CONCRETE

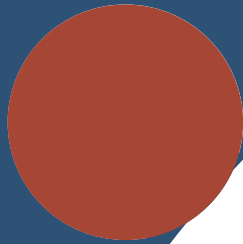
Colour Hardeners - (Primary Colours)

Release Agents (Secondary Colours)

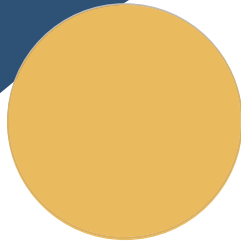
LONG LASTING COLOURS AND DURABILITY



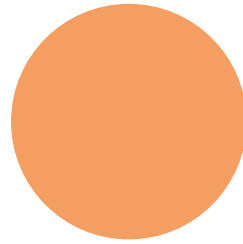
Sandy Beige
H/D - R/C



Deep Red
H/D - R/C



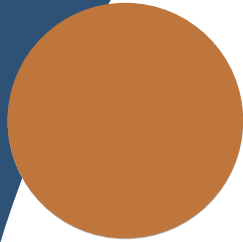
Yellow Stone
H/D - R/C



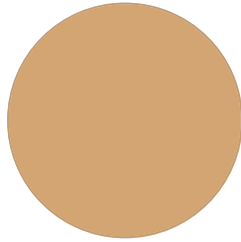
Pottery
H/D - R/C



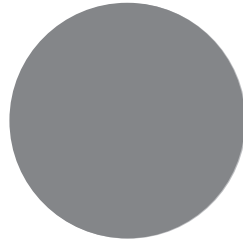
Heritage Green
H/D - R/C



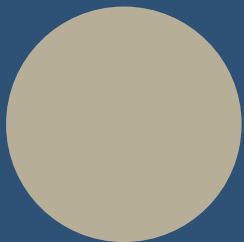
Burnt Terracotta
H/D - R/C



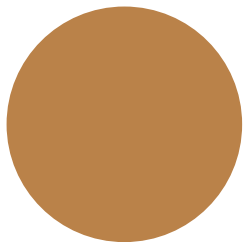
Sandstone
H/D - R/C - R/A



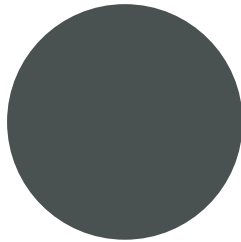
Metal Grey
H/D - R/C - R/A



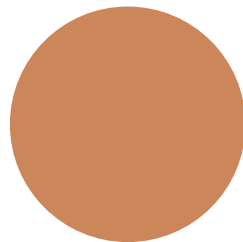
Light Grey
H/D - R/C



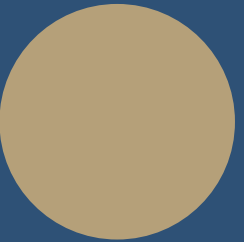
Copper
H/D - R/C



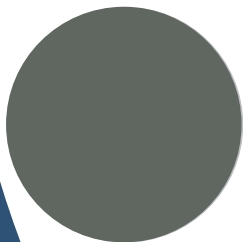
Charcoal
H/D - R/C



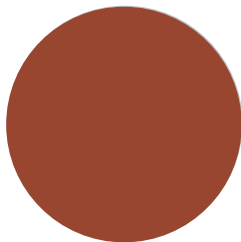
Autumn Tan
H/D - R/C - R/A



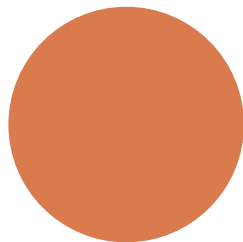
Mocha
H/D - R/C



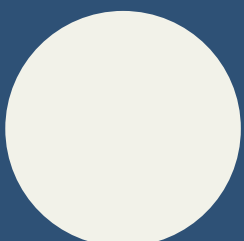
Bluestone
H/D - R/C



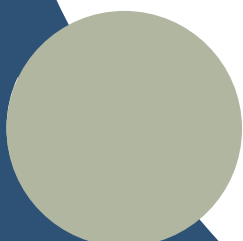
Heritage Red
H/D - R/C - R/A



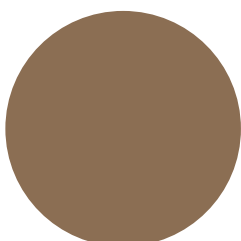
Light Terracotta
H/D - R/C - R/A



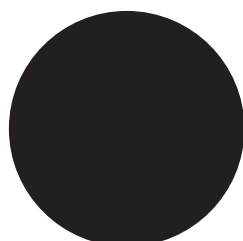
Off - White
Base Only - R/C



Natural Grey
Base Only - R/C



Earth Brown
H/D - R/C - R/A



Supreme Black
H/D - R/C - R/A



Black



Bluestone



Metal Grey



Earth brown



Heritage Red



Terracotta



Sandstone



Slate Green



Neutral

The colours on the colour chart are as close as possible to the onsite finished product. Variations may occur due to the nature of the product with varying job conditions, associated materials used in conjunction with the products and finishing practices used by the applicator. Colourtone Stencil Systems has specifically formulated the products for use in Decorative Concrete with long lasting colours and durability